



# PLAZA ON THE GREEN

on the West Nine at Firethorn

*Lincoln's newest and finest  
office development.*

*54,000 sq. ft. leasable space.*





# PLAZA ON THE GREEN

on the West Nine at Firethorn



Bring inspiration and life into your new office space at Plaza on the Green located in Firethorn. Nestled in a quiet, upscale neighborhood, with easy access from 84<sup>th</sup> Street, Plaza on the Green is Lincoln's prestige professional office location.

Plaza on the Green is located on 88<sup>th</sup> & Firethorn Lane overlooking the 9<sup>th</sup> hole on the West Nine. This quiet, private building offers everything a business desires.

The Plaza on the Green vision is one of modern, high efficiency architecture combined with light and natural surroundings - boasting large windows overlooking a golf course, a lush landscape design, walking path, and patio/deck space. A conference room (1,300 sq. ft.) is available to all tenants. A large parking lot, as well as limited underground parking, is available for tenants.

Plaza on the Green is an ideal setting for Law, Accounting, Wealth Management, Marketing and other professionals looking for a prestige location in Lincoln.

Donald Everett, Jr. • 402-423-2394 x 111 • [deverett@runza.com](mailto:deverett@runza.com)  
[www.plazaonthegreen.com](http://www.plazaonthegreen.com) • 88<sup>th</sup> & Firethorn Lane • Lincoln, NE



- 88<sup>th</sup> & Firethorn Lane.
- Private.
- Quiet green space overlooking the 9<sup>th</sup> hole of the West Nine golf course.
- Walking path.
- 3,000 to 20,000 sq. ft. spaces available.  
54,000 sq. ft. total leasable space.
- Conference room (1,300 sq. ft.) available to all tenants. Includes restrooms, full kitchen and outdoor patio.
- VIP underground parking.
- Steel frame open floor plan interior.
- Patio and deck space.
- High efficiency HVAC and geothermal heating.
- Controlled access.
- Professional property management.



Donald Everett, Jr. • 402-423-2394 x 111 • [deverett@runza.com](mailto:deverett@runza.com)  
[www.plazaonthegreen.com](http://www.plazaonthegreen.com) • 88<sup>th</sup> & Firethorn Lane • Lincoln, NE



PLAZA ON THE GREEN

on the West Nine at Firethorn



This areal view looking north shows the open, tree-lined landscape of the Plaza on the Green campus. Situated on the 9<sup>th</sup> hole of the West Nine at Firethorn, Plaza on the Green offers a spectacular view.

The large parking lot south of the building is easily accessible off of Firethorn Lane. Limited underground parking is available for tenants.

A walking path not only connects your office to the surrounding natural landscape but also offers an easy path to the Resort at Firethorn complete with a restaurant, swimming pool, gym and tennis courts.

Call Donald Everett, Jr. today for more information and to plan your future business space.

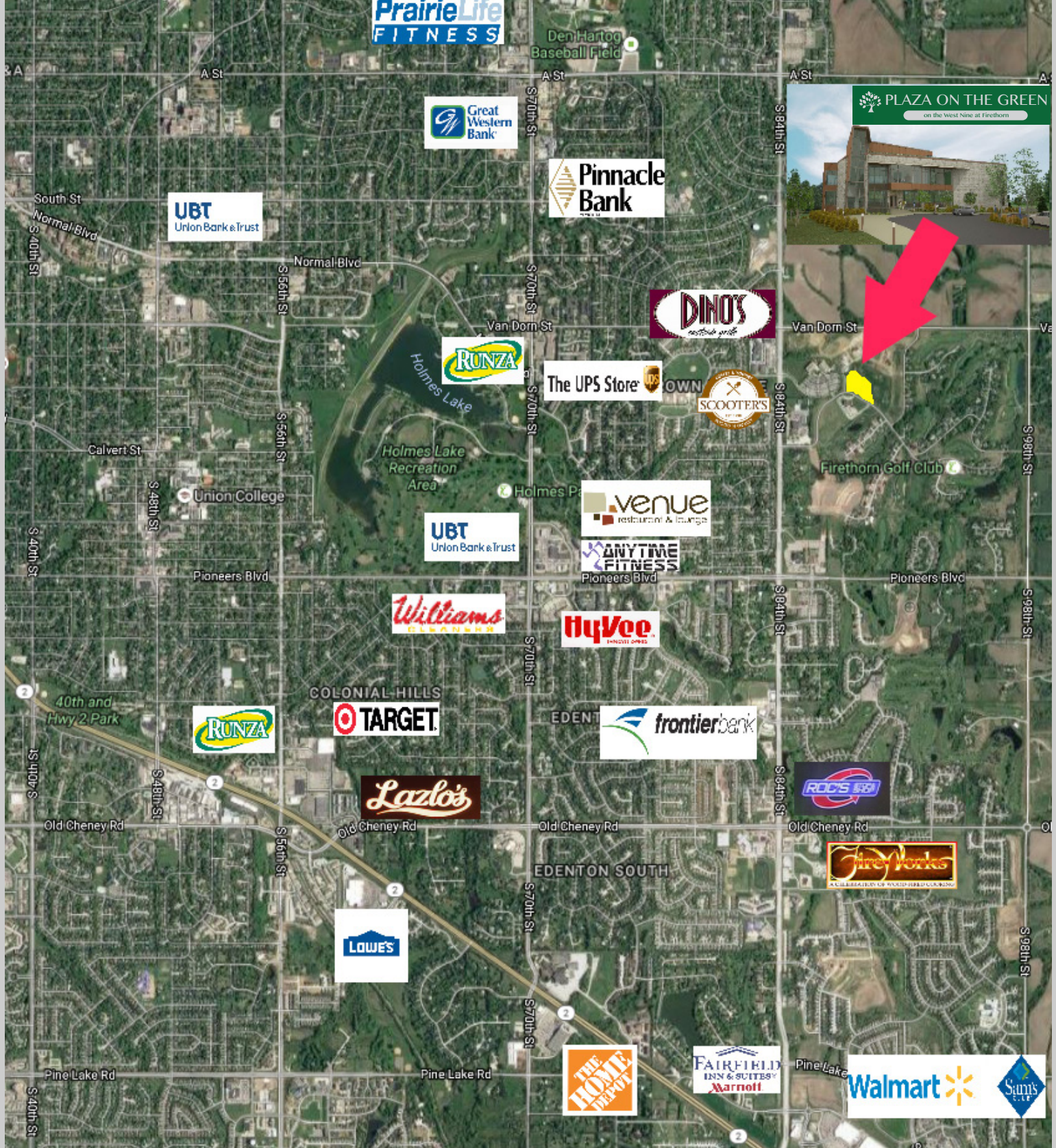
Donald Everett, Jr. • 402-423-2394 x 111 • [deverett@runza.com](mailto:deverett@runza.com)  
[www.plazaonthegreen.com](http://www.plazaonthegreen.com) • 88<sup>th</sup> & Firethorn Lane • Lincoln, NE



# PLAZA ON THE GREEN

on the West Nine at Firethorn





# PLAZA ON THE GREEN

on the West Nine at Firethorn

Donald Everett, Jr. • 402-423-2394 x 111 • [deverett@runza.com](mailto:deverett@runza.com)  
[www.plazaonthegreen.com](http://www.plazaonthegreen.com) • 88<sup>th</sup> & Firethorn Lane • Lincoln, NE